

Expression of a Buckwheat Trypsin Inhibitor Gene in *Escherichia coli* and its Effect on Multiple Myeloma IM-9 Cell Proliferation

Zheng ZHANG, Yuying LI, Chen LI, Jingming YUAN, and Zhuanhua WANG*

Key Laboratory for Chemical Biology and Molecular Engineering of the Ministry of Education,
Institute of Biotechnology, Shanxi University, Taiyuan 030006, China

Abstract The gene of buckwheat trypsin inhibitor (BTI) has been cloned and expressed in *Escherichia coli*. The yield of this recombinant inhibitor was over 12 mg/L by using one-step purification on a Ni²⁺-NTA Sepharose column. Its molecular weight was 9322.1 Da, determined by mass spectrum analysis. The MTT and cytometry analyses showed that recombinant BTI could specifically inhibit the proliferation of IM-9 human B lymphoblastoid cells (from patient with multiple myeloma) in a dose-dependent manner. The test of recombinant BTI-induced apoptosis in IM-9 cells implied that the inhibitor might have potential application in the treatment of cancer.

Keywords buckwheat trypsin inhibitor; IM-9 cell; inhibitory activity; apoptosis

Protease inhibitors are widely distributed in all types of life forms and those from the cowpea, arrowhead, and peanut have been studied [1–3]. In particular, serine protease inhibitors from plants are well-known defense compounds [4,5] that also regulate endogenous proteases [6]. These proteins that are expressed in developing seeds are assumed to play an important role in inhibiting trypsin and chymotrypsin of external origin [7–9]. Two major serine protease inhibitors, Kunitz inhibitors and Bowman-Birk inhibitors (BBIs), have been extensively studied in plants [10]. BBIs, encoded by a family of related genes, are Cys-rich proteins of approximately 8–16 kDa. To date, the 3-D structures, amino acid sequences, and physicochemical properties of small molecular weight BBIs have been explored [11–14]. Interestingly, these inhibitors displayed anticarcinogenic activity and acted as a cancer preventive or anti-inflammatory agent [15–17]. In the last two decades, many studies on gene cloning and the expression of protease inhibitors have been reported with the rapid development of biotechnology [18,19]. However, the gene cloning and expression of buckwheat trypsin in-

hibitor (BTI) has not been reported.

Buckwheat (*Fagopyrum esculentum* Moench.) is a dicotyledonous crop with a short growing period and can tolerate poor soil conditions. It is cultivated widely in Asia, eastern Europe, North America, and Australia. Even though it is an underutilized crop, it remains important for food supply in the temperate and hilly regions of countries in east Asia, east Europe, and the Himalayan area. Buckwheat contains a rich supply of amino acids, abundant vitamins B₁ and B₂, dietary fiber, proteins, minerals, and vitamin P [20]. Traditionally, buckwheat has been used as a nutritional food and leafy vegetable, as well as for fodder and medicine in the countries of east and south Asia. Nowadays, buckwheat is an important health food, and has been widely investigated in terms of planting, breeding, and estimation of nutritional qualities. Several protease inhibitors from buckwheat seeds have been reported [21,22]. Among them, a buckwheat inhibitor (BWI)-1 protein extracted from common buckwheat seeds with a molecular weight of 7.7 kDa is a potato inhibitor I family member [23]. It was found that BWI-1 and BWI-2a extracted from buckwheat seeds could inhibit T-acute lymphoblastic leukemia cells [24].

Previously, we obtained a new gene encoding buckwheat trypsin inhibitor and the nucleotide sequence data

Received: January 23, 2007 Accepted: April 26, 2007

This work was supported by grants from the National Natural Science Foundation of China (No. 30470178 and 30671084) and the Committee of Science and Technology of Shanxi Province

*Corresponding author: Tel, 86-351-7017022; Fax, 86-351-7011499; E-mail, zhwang@sxu.edu.cn

DOI: 10.1111/j.1745-7270.2007.00332.x

have been submitted to the GenBank database under accession No. AY335158. A homology analysis showed that the amino acid sequence of buckwheat trypsin inhibitor obtained in our laboratory is totally identical to that of BWI-1, and its molecular size and inhibitory activity are similar to those of BBIs. To reveal the inhibitory activities towards proteases and tumor cells, the open-reading frame of the buckwheat trypsin inhibitor gene was chemically synthesized and expressed in *Escherichia coli* M15. The product was subjected to one-step purification and the bioactivity was analyzed.

Materials and Methods

Materials

Bacterial strains *E. coli* M15 (pREP4), *E. coli* DH5 α , and pQE-31 (Qiagen, Carlsbad, USA) were stored in our laboratory at -70°C . A Ni²⁺-NTA agarose column (HiTrap chelating HP) was purchased from Amersham Pharmacia Biotech (Uppsala, Sweden). Restriction enzymes for gene manipulation and expression were purchased from Promega (Madison, USA). RPMI 1640 was purchased from Gibco Life Technologies (Carlsbad, USA). Fetal bovine serum was purchased from the Institute of Hematology (Hangzhou, China). MTT assay kit was purchased from Sigma-Aldrich (St. Louis, USA). The Annexin V-FITC apoptosis detection kit was obtained from Pharmingen-Becton Dickinson (San Diego, USA). The plasmid mini kit for plasmid recovery and purification and the DNA gel extraction mini kit were from HuaShun Company (Shanghai, China). Trypsin was from Sigma-Aldrich. All chemicals and reagents used were of analytical grade.

Cloning and construction of recombinant plasmids

The buckwheat trypsin inhibitor cDNA was synthesized using total RNA isolated from buckwheat leaves as the template for amplification of the target gene by polymerase chain reaction (PCR). The oligonucleotide primers used were 5'-ATGGATCCTCTGCGTCAGTGCTCCGGTAA-ACAAGAATGGCCAGAGCTCG-3' and 5'-ATAAGCTTT-TATCACATAACAACAGGAGTATCAACAA-3'. The PCR thermal profile consisted of 30 cycles of 94°C for 1 min, 55°C for 1 min, and 72°C for 1 min, followed by a final extension at 72°C for 10 min. The PCR product was purified and digested with *Bam*HI and *Hind*III, and the DNA fragment encoding buckwheat trypsin inhibitor was then ligated into the pGEM-T easy vector and transformed

into *E. coli* DH5 α . The sequence of the inserted fragment was confirmed by using an automatic DNA sequencer (ABI Prism, Foster city, USA); the gene fragment was then digested with *Bam*HI and *Hind*III and separated by agarose gel electrophoresis. Then BTI cDNA was inserted into the pQE-31 expression vector to form the recombinant plasmid pQE-31-BTI.

Expression of the recombinant protein

The recombinant plasmid pQE-31-BTI was transformed into competent *E. coli* M15(pREP4) cells [25]. The transformed *E. coli* cells were grown in 1 liter of LB medium supplemented with 100 $\mu\text{g/ml}$ ampicillin and 25 $\mu\text{g/ml}$ kanamycin at 37°C until the optical density (OD) at 600 nm reached 0.6–0.7. Then isopropyl-D-thiogalactopyranoside (IPTG) was added to a final concentration of 0.5 mM and the culture was further incubated at 37°C for 4 h. The cells were harvested by centrifugation at 6000 g for 30 min at 4°C and then lysed by ultrasonication. The cell lysate was then centrifuged at 15,000 g for 30 min at 4°C . Both the supernatant and the pellet were analyzed by sodium dodecylsulfate-polyacrylamide gel electrophoresis (SDS-PAGE) using a 12.5% polyacrylamide gel [26]. The gel was stained by Coomassie brilliant blue R-250 and scanned using a densitometer (GeneGenius 8000; Syngene, Upland, USA) to determine the percentage of the fusion protein in the total proteins from the cultured cells.

One-step purification of the fusion protein

The supernatant was applied to a Ni²⁺-NTA agarose column pre-equilibrated with buffer I (20 mM Tris-HCl, 500 mM NaCl, and 10 mM imidazole, pH 7.4). The column was thoroughly washed with the same buffer until the OD at 280 nm was returned to the baseline. Unbound proteins were eluted with 20 mM imidazole. The bound His₆-tagged fusion protein was eluted with buffer II (20 mM Tris-HCl, 500 mM NaCl, and 500 mM imidazole, pH 7.4) and the fractions were checked by SDS-PAGE, and the fractions containing the fusion protein were collected and dialyzed overnight against 20 mM phosphate buffer (pH 7.4) at 4°C .

Western blot analysis and molecular weight determination

The purified fusion protein was subject to SDS-PAGE and transferred onto nitrocellulose membrane using the TE-22 blotter (Amersham Pharmacia Biotech) at 100 V for 1 h in transfer buffer (25 mM Tris, 192 mM glycine, and 20% methyl alcohol, pH 8.3) according to the

manufacturer's instructions. After being blocked with defatted milk, the membrane was incubated with mouse anti-His antibody (1:1000) (Amersham Pharmacia Biotech, Uppsala, Sweden) for 1 h and then with goat anti-mouse IgG-AP (1:10,000) (Sino-American Biotechnology, Beijing, China) for 30 min at room temperature. The membrane was stained for 1 h in AP color development solution containing 1 ml of 1×AP reaction buffer with 50 µl of NBT solution and 50 µl of BCIP solution (Tiangen, Beijing, China). The molecular weight of the fusion protein was determined by MALDI-TOF-MS (CIPHERGEN, Fremont, USA) analysis.

Determination of inhibitory activity

The trypsin inhibitory activity was determined by the method of Erlanger *et al.* [27]. Briefly, in 3 ml of 0.01 M Tris (pH 8.0), 1 mM CaCl₂, 3 µg of trypsin, and suitable amounts of rBTI were incubated with 0.15 mM BAPNA. The residual trypsin activity was measured at 410 nm. One unit of inhibitory activity (U_i) was defined as the amount of the inhibitor that led to a decrease of 0.01 in absorbance at 410 nm in 1 ml of reaction solution per minute [28]. The protein concentration was determined by the method of Bradford [29] using bovine serum albumin as standard.

Bioactivity of rBTI for inducing apoptosis

The bioactivity of rBTI was determined using human B lymphoblastoid cells with multiple myeloma (IM-9 cells). The inhibition of IM-9 cell proliferation was measured by using a colorimetric method [30] with the reagent MTT. Briefly, 1×10⁵ IM-9 cells or Bcl-2 over-expressing IM-9 cells (IM-9/Bcl-2 cells) were treated with rBTI (12.5–100 µg/ml) and transferred to quadruplicate wells of 96-well microtiter plates at the indicated time points, respectively. After incubating at 37 °C for 24 h, 20 µl of MTT was added and incubated for 4 h; following this, 80 µl of DMSO was added. The color intensity was measured using a microtiter plate reader (Bio-Rad model 550, Hercules, USA) at 570 nm. Medium alone was taken as a blank control.

Flow cytometry analysis of apoptosis

A flow cytometry analysis of Annexin V-fluorescein isothiocyanate (FITC) and propidium iodide (PI)-stained cells was performed using an apoptosis detection kit according to the manufacturer's instructions. Briefly, IM-9 cells and IM-9/Bcl-2 cells (1×10⁵) treated with or without rBTI were washed with 50 mM cold phosphate buffer (pH 7.6) and centrifuged at 12,000 g for 5 min. The cells were suspended in 100 µl of binding buffer. A mixture of 5 µl of fluorescence-conjugated Annexin V (a

Ca²⁺-dependent and phospholipid-binding protein) and 2 µl of PI was added to the cell suspension and then incubated for 15 min at room temperature. The samples were analyzed for Annexin V binding within 1 h by flow cytometry.

Results

Expression of the recombinant protein

The coding region of BTI amplified by PCR could be detected after double-enzymatic digestion, and the DNA sequence analysis of the pQE-31-BTI plasmid also confirmed that the *BTI* gene was correctly inserted into the pQE-31 vector (data not shown). The optimal conditions chosen for expression were OD₆₀₀ 0.6 for induction and 0.5 mM IPTG at 37 °C for 4 h. In SDS-PAGE analysis (Fig. 1), a clearly expressed band of the IPTG-inducible target protein (Fig. 1, lane 3) was observed in the cell lysates. The expressed product was mainly in the supernatant, and the amount of fusion protein reached

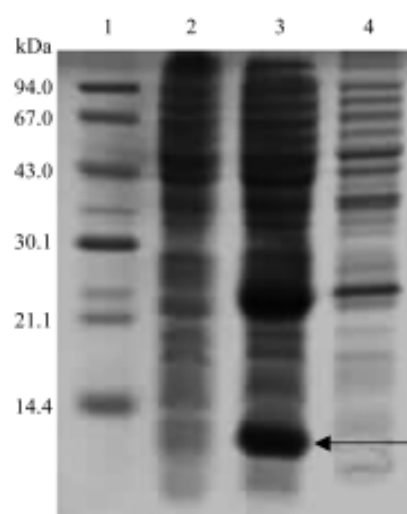


Fig. 1 Sodium dodecylsulfate-polyacrylamide gel electrophoresis analysis of expression products

Lane 1, standard proteins marker; lane 2, uninduced cell lysate of M15/pQE-31; lane 3, total soluble protein with isopropyl-D-thiogalactopyranoside induction for 4 h (M15/pQE-31-BTI); lane 4, insoluble protein fraction obtained from the pellet. Arrow indicates the target protein. rBTI, recombinant buckwheat trypsin inhibitor.

approximately 30% of the soluble protein.

Purification and analysis of rBTI

The SDS-PAGE analysis showed that a highly purified

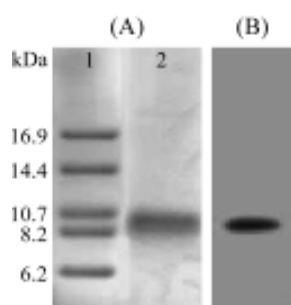


Fig. 2 Affinity chromatography and Western blot analysis (A) Sodium dodecylsulfate-polyacrylamide gel electrophoresis analysis of affinity chromatography fraction. Lane 1, standard proteins marker; lane 2, 20 μg of purified recombinant buckwheat trypsin inhibitor. (B) Western blot analysis of the purified recombinant protein.

target protein was obtained as a single band [Fig. 2(A)] and the purity was >95%. The Western blot analysis indicated that the target protein appeared at the expected position [Fig. 2(B)]. The molecular weight of the recombinant inhibitor with His₆ tagged was 9322.1 Da, determined by mass spectrum analysis. This was in good agreement with its theoretical value (9315.5 Da) deduced from the DNA sequence. The amino acid sequence deduced according to the nucleotide sequence of the *BTI* gene showed that rBTI is totally identical with that of BWI-1 [22] extracted from buckwheat seeds and had 85% homology with the potato inhibitor I family of serine protease inhibitors from other plants [31]. The yield of the purified rBTI was 12 mg per liter (Table 1), showing that the purification of rBTI by affinity chromatography was mainly achieved by elution with imidazole at a concentration of 500 mM in 20 mM Tris-HCl buffer, with only one step required for 10-fold purity of the target protein.

Identification of the inhibitory activity of rBTI

The inhibitory activity of the target protein against trypsin was assayed with BApNA as substrates, and the inhibitory activity unit (U_I) was calculated based on that described in “Materials and Methods”. The result showed that rBTI

strongly inhibits the activity of trypsin, and the specific activity reached 13.0 U_I/mg (Table 1).

Inducing cancer cell apoptosis by rBTI

The results showed that rBTI could obviously inhibit the proliferation of multiple myeloma IM-9 and IM-9/Bcl-2 cells in a dose-dependent manner at all concentration levels, and the inhibitory effects showed statistical significance at 50 $\mu\text{g}/\text{ml}$ ($P < 0.05$), 100 $\mu\text{g}/\text{ml}$ ($P < 0.01$), and 200 $\mu\text{g}/\text{ml}$ ($P < 0.01$) (Fig. 3). In addition, the target protein at 100 $\mu\text{g}/\text{ml}$ could inhibit the proliferation of IM-9 cells in a time-dependent manner within 6–72 h of exposure (data not

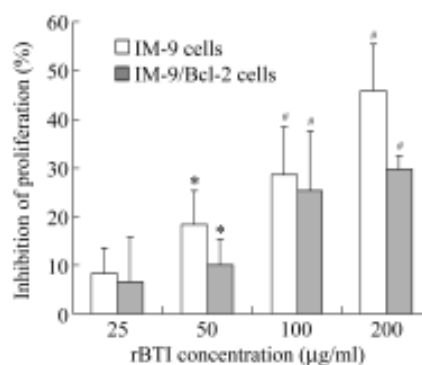


Fig. 3 Effects of recombinant buckwheat trypsin inhibitor (rBTI) on cell proliferation

IM-9 (1×10^5) and IM-9/Bcl-2 cells (1×10^5) were respectively transferred to quadruplicate wells of a 96-well microtiter plate in 0.25 ml of culture medium (80 μl of rBTI, 50 μl of DMSO, and 20 μl of MTT). After incubating for 24 h, the growth inhibitions of the IM-9 and IM-9/Bcl-2 cells by rBTI were measured. * $P < 0.05$, # $P < 0.01$.

shown).

Furthermore, apoptosis was induced by adding rBTI to the IM-9 cells in the culture. The IM-9 cells and the IM-9/Bcl-2 cells treated with or without rBTI (25–200 $\mu\text{g}/\text{ml}$) for 24 h were double-labeled with the Annexin V-FITC conjugate and PI. The cell suspension was subsequently analyzed by flow cytometry. As shown in Fig. 4,

Table 1 Purification of recombinant buckwheat trypsin inhibitor expressed in *Escherichia coli* cells

Purification step	Total protein (mg)	Inhibitory activity ^a (U_I)	Specific activity (U_I/mg)	Yield (%)	Purity (fold)
Cell lysate	300	406	1.35	100	1
Ni ²⁺ -NTA agarose	12	156	13.00	38	10

^a One unit of inhibitory activity (U_I) is defined as the amount of inhibitor that decreases the absorbance at 410 nm by 0.01 in 1 ml of the reaction solution per minute. Experimental data for the inhibitory activity of recombinant buckwheat trypsin inhibitor are the average of three measurements.

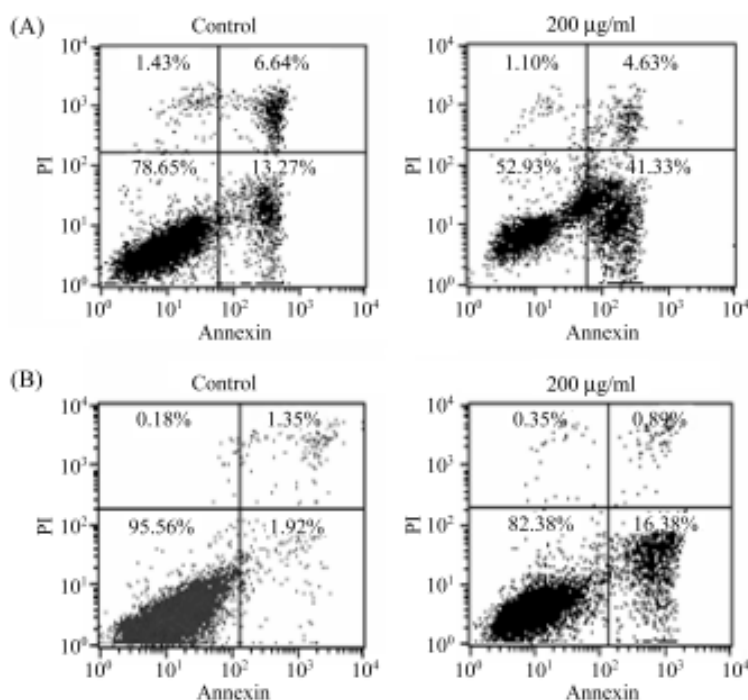


Fig. 4 Flow cytometric analysis of tumor cells treated with recombinant buckwheat trypsin inhibitor (rBTI)

IM-9 and IM-9/Bcl2 cells were cultured with or without 200 µg/ml rBTI. After 24 h of culture, the cells were double-labeled with Annexin V-fluorescein isothiocyanate conjugate and propidium iodide and were subjected to flow cytometry. Apoptosis of IM-9 (A) and IM-9/Bcl2 (B) cells were induced by rBTI.

13.27% of untreated and 41.33% of rBTI (200 µg/ml) treated IM-9 cells were stained positive with Annexin V and negative with PI [Fig. 4(A)]. In addition, approximately 1.92% of untreated and 16.38% of rBTI (200 µg/ml) treated IM-9/Bcl-2 cells were undergoing apoptosis after 24 h of incubation [Fig. 4(B)].

Discussion

The expression and purification of a buckwheat trypsin inhibitor and its effect on the proliferation of cancer cells has not been previously reported, although there have been some studies on the isolation and purification of natural trypsin inhibitors from buckwheat seeds [32–34]. In this study, the rBTI was highly expressed in a soluble state in *E. coli* M15 cells. The target protein could be easily purified by one-step affinity chromatography, with approximately 12 mg of pure rBTI obtained from 1 liter of bacterial culture. The molecular weight of rBTI was 9322.1 Da, and the purity was >95%. Furthermore, inhibitory activity assays suggested that the recombinant protein strongly inhibited the activity of trypsin. The purified protein also specifically inhibited the proliferation of multiple myeloma IM-9 cell lines in a dose-dependent manner.

It is known that protease inhibitors have multiple functions, including the regulation of endogenous proteases during germination and protection of the plant from insects and microorganisms. Recent interest has focused on pharmaceutical applications of protease inhibitors as anti-apoptotic [14] and targeted antitumor polymeric agents [15,17]. In recent years, the incidence of various tumors and hematopathies has remained high, whereas the number of antitumor drugs is still comparatively low. In this paper, the results of the apoptosis induction tests suggest that rBTI is bioactive to multiple myeloma IM-9 cells; not only were IM-9 cells undergoing apoptosis, but IM-9/Bcl-2 cells [35] were also inhibited after treatment with the rBTI. How rBTI can inhibit the proliferation of IM-9 cells and whether other plant trypsin inhibitors have an induction of apoptosis in cancer cells are not fully understood. Trypsin inhibitors may effect the expression of one or more promoting tumor factors. Because some tumor cells have a specific receptor for trypsin inhibitors on their surface [36], when binding occurs, tumor cell invasion and metastasis can be prevented and the pericellular matrix can also be restabilized.

In conclusion, rBTI was first expressed and easily purified with a one-step method. The novel function of rBTI in inhibiting the proliferation of myeloma IM-9 cells might be valuable for further studies on inducing the

apoptosis pathway by the recombinant buckwheat trypsin inhibitor.

Acknowledgements

We thank Prof. Quan CHEN and Dr. Xiaobo LEI (Institute of Zoology of the Chinese Academy of Sciences, Beijing, China) for the apoptosis tests, and Prof. Chengwu CHI (Institute of Biochemistry and Cell Biology, Chinese Academy of Sciences, Shanghai, China) for helpful suggestions on the manuscript.

References

- Melo FR, Rigden DJ, Franco OL, Mello LV, Ary MB, Grossi de Sa MF, Bloch CJ. Inhibition of trypsin by cowpea thionin: Characterization, molecular modeling, and docking. *Proteins* 2002, 48: 311–319
- Li J, Ruan KC, Chi CW. The assignment of the reactive sites of the double-headed arrowhead proteinase inhibitor A and B. *Acta Biochim et Biophys Sin* 2002, 34: 662–666
- Boateng JA, Viquez OM, Konan KN, Dodo HW. Screening of a peanut (*Arachis hypogaea* L.) cDNA library to isolate a Bowman-Birk trypsin inhibitor clone. *J Agric Food Chem* 2005, 53: 2028–2031
- Azzouz H, Cherqui A, Campan ED, Rahbe Y, Dupont G, Jouanin L, Kaiser L, Giordanengo P. Effects of plant protease inhibitors, oryzacystatin I and soybean Bowman-Birk inhibitor, on the aphid *Macrosiphum euphorbiae* (Homoptera, Aphididae) and its parasitoid *Aphelinus abdominalis* (Hymenoptera, Aphelinidae). *J Insect Physiol* 2005, 51: 75–86
- Rahbe Y, Ferrasson E, Rabesona H, Quillien L. Toxicity to the pea aphid *Acyrtosiphon pisum* of anti-chymotrypsin isoforms and fragments of Bowman-Birk protease inhibitors from pea seeds. *Insect Biochem Mol Biol* 2003, 33: 299–306
- Mello MO, Tanaka AS, Silva-Filho MC. Molecular evolution of Bowman-Birk type proteinase inhibitors in flowering plants. *Mol Phylogenet Evol* 2003, 27: 103–112
- Laskowski M Jr, Kato I. Protein inhibitors of proteinases. *Annu Rev Biochem* 1980, 49: 593–626
- Mosha TC, Gaga HE. Nutritive value and effect of blanching on the trypsin and chymotrypsin inhibitor activities of selected leafy vegetables. *Plant Foods Hum Nutr* 1999, 54: 271–283
- Deshimaru M, Yoshimi S, Shioi S, Terada S. Multigene family for Bowman-Birk type proteinase inhibitors of wild soja and soybean: The presence of two BBI-A genes and pseudogenes. *Biosci Biotechnol Biochem* 2004, 68: 1279–1286
- Ryan CA. Proteinase inhibitors in plants: Genes for improving defenses against insects and pathogens. *Annu Rev Phytopathol* 1999, 28: 425–449
- Li de la Sierra I, Quillien L, Flecker P, Gueguen J, Brunie S. Dimeric crystal structure of a Bowman-Birk protease inhibitor from pea seeds. *J Mol Biol* 1999, 285: 1195–1207
- Song HK, Kim YS, Yang JK, Moon J, Lee JY, Suh SW. Crystal structure of a 16 kDa double-headed Bowman-Birk trypsin inhibitor from barley seeds at 1.9 Å resolution. *J Mol Biol* 1999, 293: 1133–1144
- Bueno NR, Fritz H, Auerswald EA, Mentele R, Sampaio M, Sampaio CA, Oliva ML. Primary structure of *Dioclea glabra* trypsin inhibitor, DgTI, a Bowman-Birk inhibitor. *Biochem Biophys Res Commun* 1999, 261: 838–843
- Foehr MW, Tomei LD, Goddard JG, Pemberton PA, Bathurst IC. Antiapoptotic activity of the Bowman-Birk inhibitor can be attributed to copurified phospholipids. *Nutr Cancer* 1999, 34: 199–205
- Gladysheva IP, Moroz NA, Karmakova TA, Nemtsova ER, Yakubovskaya RI, Larionova NI. Immunoconjugates of soybean Bowman-Birk protease inhibitor as targeted antitumor polymeric agents. *J Drug Target* 2001, 9: 303–316
- Marschutz MK, Bernkop-Schnurch A. Oral peptide drug delivery: Polymer-inhibitor conjugates protecting insulin from enzymatic degradation *in vitro*. *Biomaterials* 2000, 21: 1499–1507
- Malkowicz SB, Liu SP, Broderick GA, Wein AJ, Kennedy AR, Levin RM. Effect of the Bowman-Birk inhibitor (a soy protein) on *in vitro* bladder neck/urethral and penile corporal smooth muscle activity. *Neurourol Urodyn* 2003, 22: 54–57
- Li N, Qu LJ, Liu Y, Li Q, Gu H, Chen Z. The refolding, purification, and activity analysis of a rice Bowman-Birk inhibitor expressed in *Escherichia coli*. *Protein Expr Purif* 1999, 15: 99–104
- Chen PW, Chow SH, Chen LJ. Nucleotide sequence of a cDNA (Accession No. U76004) encoding rice Bowman-Birk proteinase inhibitor (PGR 97-015). *Plant Physiol* 1997, 113: 663–665
- Skrabanja V, Liljeberg Elmstahl HG, Krefth I, Bjorck IM. Nutritional properties of starch in buckwheat products: Studies *in vitro* and *in vivo*. *J Agric Food Chem*. 2001, 49: 490–496
- Park SS, Abe K, Kimura M, Urisu A, Yamasaki N. Primary structure and allergenic activity of trypsin inhibitors from the seeds of buckwheat (*Fagopyrum esculentum* Moench). *FEBS Lett* 1997, 400: 103–107
- Belozersky MA, Dunaevsky YE, Musolyamov AX, Egorov TA. Complete amino acid sequence of the protease inhibitor from buckwheat seeds. *FEBS Lett* 1995, 371: 264–266
- Dunaevsky YE, Gladysheva IP, Pavlukova EB, Beliakova GB, Gladyshev DP, Papisova AI, Larionova NI *et al*. The anionic protease BWI-1 from buckwheat seeds. Kinetic properties and possible roles. *Physiologia Plantarum* 1997, 101: 483–488
- Park SS, Ohba H. Suppressive activity of protease inhibitors from buckwheat seeds against human T-acute lymphoblastic leukemia cell lines. *Appl Biochem Biotechnol* 2004, 117: 65–74
- Orlandi R, Gussow DH, Jones PT, Winter G. Cloning immunoglobulin variable domains for expression by the polymerase chain reaction. *Proc Natl Acad Sci USA* 1989, 86: 3833–3837
- Laemmli UK. Cleavage of structural proteins during the assembly of the head of bacteriophage T4. *Nature* 1970, 227: 680–685
- Erlanger BF, Kokowsky N, Cohen W. The preparation and properties of two new chromogenic substrates of trypsin. *Arch Biochem Biophys* 1961, 95: 271–278
- Xie ZW, Luo MJ, Xu WF, Chi CW. Two reactive site locations and structure-function study of the arrowhead proteinase inhibitors, A and B, using mutagenesis. *Biochemistry* 1997, 36: 5846–5852
- Bradford MM. A rapid and sensitive method for the quantitation of microgram quantities of protein utilizing the principle of protein-dye binding. *Anal Biochem* 1976, 72: 248–254
- Mosmann T. Rapid colorimetric assay for cellular growth and survival: Application to proliferation and cytotoxicity assays. *J Immunol Methods* 1983, 65: 55–63
- Kim JY, Park SC, Kim MH, Lim HT, Park Y, Hahm KS. Antimicrobial activity studies on a trypsin-chymotrypsin protease inhibitor obtained from potato. *Biochem Biophys Res Commun* 2005, 330: 921–927
- Tsybina TA, Dunaevsky YE, Musolyamov AK, Egorov TA, Belozersky MA. Cationic inhibitors of serine proteinases from buckwheat seeds. *Biochemistry* 2001, 66: 941–947
- Belozersky MA, Dunaevsky YE, Voskoboinikova NE. Isolation and prop-

- erties of a metalloproteinase from buckwheat (*Fagopyrum esculentum*) seeds. *Biochem J* 1990, 272: 677–682
- 34 Belozersky MA, Dunaevsky YE, Musolyamov AK, Egorov TA. Amino acid sequence of the protease inhibitor BWI-4a from buckwheat seeds. *IUBMB Life* 2000, 49: 273–276
- 35 Reed JC. Bcl-2: Prevention of apoptosis as a mechanism of drug resistance. *Hematol Oncol Clin North Am* 1995, 9: 451–473
- 36 Kobayashi H, Gotoh J, Hirashima Y, Terao T. Inter-alpha-trypsin inhibitor bound to tumor cells is cleaved into the heavy chains and the light chain on the cell surface. *J Biol Chem* 1996, 271: 11362–11367

Edited by
Minghua XU